



**Building
Contracting**



**Specialized
Flooring**



Fars Al Mazrooei Contracting

Construction / Concrete Flooring

FAM Flooring Division has designed and completed over 4 million square meter of superflat industrial concrete floors for clients in UAE, Qatar, Indonesia and Malaysia. FAM's client base reflects multi national and regional players. To build on its success FAM continues to invest in the latest innovative technology to lay high tolerance floors to the highest standards.

We own and operate three large Somero Laser Screed machines and one automatic topping spreader along with sufficient number of ride- on double disc power floating machines.

We prepare, for all our projects, technical submissions including Method Statement, Concrete Mix Design and Material Specifications.



Turn-Key Construction

FAM has very strong relationships with DM, Trakhees, DWC and other Authorities. We have in-house engineering capacity to back our Turn-Key Projects and have executed a number of such Projects all over the Middle East and Far East.

Our construction division is committed to:

- ✓ Comprehensive QA system employed for all activities.
- ✓ The safety of all our staff.
- ✓ Delivering on time and on budget



We have successfully carried out
Turn-Key Constructions for:

- ✓ Industries
- ✓ Cold Stores
- ✓ Offices
- ✓ Distribution Centers



We design Construction joint layout drawings incorporating all kinds of joint details, existing structure and the racking system.

We have all required insurances such as Design Insurances, Contractors All Risk Insurance according to local rules/regulations and practices.

We provide Floor Flatness Survey Reports in line with international standards and guidelines.

Our Services

JOINTLESS FLOORS

Joints are one of the greatest problem in a modern warehouse. The use of Equipment with small wheels is not suited for saw cut joints because every time the equipment drive over the joint both the edges of the joints and the wheels of the equipment get damaged. This results in increased maintenance and repair works.

INDUSTRIAL FLOORS

An unlevel storage floor will impact other handling systems, such as pallet racks, automated storage and retrieval systems, conveyors, horizontal carousels and narrow-aisle truck operations. Therefore, it is vital to ensure a completely flat floor.

VACUUM DEWATERED FLOORS

FAM Flooring Division is the first contractor in the Middle East to introduce Vacuum Dewatering of floor casting. Vacuum Dewatering is the best way to reduce the water content in the fresh concrete. The risk of rapid drying of the concrete surface results in curling and cracking

Our Clients



PHONE +971 4 885 5316 | +971 4 324 0447 **FAX** +971 4 889 5533 | +971 4 324 0451

WEBSITE www.fam.ae

E-MAIL info@fam.ae

LOCATION Dubai Investment Park 2

Some of Our Projects



Project: DUBAI INDUSTRIAL CITY
Completion: January 2019
Area: 200 m²
Flatness Tolerance: FM2



Project: GLOBAL SHIPPING LOGISTICS
Completion: December 2019
Area: 150 m²
Flatness Tolerance: Power float



Project: SMD INTERNATIOAL
Completion: December 2019
Area: 3000 m²
Flatness Tolerance: DM3



Project: TRISTAR TRANSPORT
Completion: December 2019
Area: 900 m²
Flatness Tolerance: FM2



Project: NAFFCO FLOW CONTROL
Completion: November 2019
Area: 13,000 m²
Flatness Tolerance: FM2



Project: Emirates Printing Press LLC
Completion: September 2019
Area: 2,750 m²
Flatness Tolerance: FM2



Project : Legnano Teknoelectric
Comp Middle East FZCO
Completion: August 2019
Area: 4,000 m²
Flatness Tolerance: FM2



Project: Pyrotek Grade Slab
Completion: August 2019
Area: 4,000 m²
Flatness Tolerance: FM2



Project: Dareen International
Completion: August 2018
Area: 11,000 m²
Flatness Tolerance: DM2



Project: Tructek Inter. FZE
Completion: September 2019
Area: 600 m²
Flatness Tolerance: DM 1



Project: MHE International
Repackaging Serv. LLC
Completion: August 2019
Area: 2,980 m²
Flatness Tolerance: Category 1



Project: Pyrotek FZE
Completion: April 2019
Area: 1,700 m²
Flatness Tolerance: FM1



Project: E-Freight International LLC
Completion: March 2019
Area: 4,900 m²
Flatness Tolerance: DM1



Project: Mark Zone Building
Contracting LLC
Completion: March 2019
Area: 3,400 m²
Flatness Tolerance: DM1

Some of Our Projects



Project: Buildmark Contracting LLC
Completion: February 2019
Area: 6,000 m2
Flatness Tolerance: FM2 Special



Project: Joint Tank Services FZCO
Completion: January 2019
Area: 5,200 m2
Flatness Tolerance: DM2



Project: Al Fakher Tobacco Company
Completion: December 2018
Area: 4,700 m2
Flatness Tolerance: DM1



Project: M/S Oriental Group FZE
Completion: September 2018
Area: 4,100 m2
Flatness Tolerance: DM1



Project: City Pharmacy Co.
Completion: July 2018
Area: 16,000 m2
Flatness Tolerance: FM2 Special



Project: Mohammed H. Sharbatly Co Ltd.(Bahrain)
Completion: May 2018
Area: 3,200 m2
Flatness Tolerance: FM2 Special



Project: Faisal Al Nusif Trdng Cont.(FANTCO)
Completion: March 2018
Area: 1,900 m2
Flatness Tolerance: DM1



Project: Germo Middle East FZCO
Completion: December 2017
Area: 2,000 m2
Flatness Tolerance: DM2



Project: TLM International Freight Services
Completion: December 2017
Area: 8500 m2
Flatness Tolerance: DM1



Project: Dr. Nutrition Middle East FZCO
Completion: November 2017
Area: 3,200 m2
Flatness Tolerance: FM1



Project: Middle East Lubricants Comp. LLC
Completion: November 2017
Area: 1,200 m2
Flatness Tolerance: FM2



Project: CU Air conditioning Industries LLC
Completion: August 2017
Area: 6,200 m2
Flatness Tolerance: FM2



Project: Go Trade
Completion: July 2017
Area: 3,860 m2
Flatness Tolerance: DM1



Project: Master Baker Marketing FZCO
Completion: June 2017
Area: 6,120 m2
Flatness Tolerance: DM1

Some of Our Projects



Project: Desert Face International
FZCO Techno Park, Dubai
Completion: February 21 2017
Area: 4,900 m²
Flatness Tolerance: DM2



Project: CCL Gulf Prestresses
Concrete, Abu Dhabi
Completion: June 8 2017
Area: 150,000 m²
Flatness Tolerance: DM2 & FM1



Project: MAPEI, DIP 2 Dubai
Completion: April 27 2017
Area: 5,200 m²
Flatness Tolerance: DM2



Project: Royal Furniture, Ajman
Completion: January 28 2017
Area: 9,000 m²
Flatness Tolerance: DM2



Project: Agility Global Logistics,
DIP Dubai
Completion: November 2016
Area: 550 m²
Flatness Tolerance: DM2



Project: Center Point Logistics,
DWC DUBAI
Completion: November 2016
Area: 20,000 m²
Flatness Tolerance: DM2



Project: SUPER TEC CONTRACTING
LLC, DUBAI
Completion: 11 SEPTEMBER 2016
Area: 3,650 m²
Flatness Tolerance: DM2



Project: HANS LOGISTICS, JAFZA,
DUBAI
Completion: 21 AUGUST 2016
Area: 8,750 m²
Flatness Tolerance: DM1



Project: MOHEBI LOGISTICS LLC,
DIC, DUBAI
Completion: 24th June 2016
Area: 50000 m²
Flatness Tolerance: High Tolerance



Project: RASHIDEEN, SAIF FREE
ZONE, SHARJAH
Completion: 8th June 2016
Area: 6600 m²
Flatness Tolerance: High Tolerance



Project: TRISTAR TRANSPORT
(EPPCO), JAFZA DUBAI
Completion: 11th MAY 2016
Area: 4100 m²
Flatness Tolerance: High Tolerance



Project: GLOBAL SHIPPING LOGIS-
TICS LLC, DIC, DUBAI
Completion: 4th March 2016
Area: 33000 m²
Flatness Tolerance: High Tolerance



Project: TRISTAR, JAFZA DUBAI
Completion: 28th Jan 2016
Area: 13000 m²
Flatness Tolerance: Cat1



Project: OILFIELD SUPPLY DIC,
DUBAI
Completion: 5 Dec 2015
Area: 16000 m²
Flatness Tolerance: FM2s

Some of Our Projects



Project: DEAL FZE, DWC, DUBAI
Completion: End of Nov 2015
Area: 2200 + 6000 m2 (Truck Yard & Heater cable Area)
Flatness Tolerance: High Tolerance



Project: AFRICAN & EASTERN, DUBAI INVESTMENT PARK
Completion: 5th November 2015
Area: 2000 m2
Flatness Tolerance: DM1



Project: McCORMICK, JAFZA, DUBAI
Completion: 16th Sept 2015
Area: 1500 m2
Flatness Tolerance: DM1



Project: DEAL FZE, DWC, DUBAI
Completion: End of Sept 2015
Area: 26000 m2
Flatness Tolerance: Super flat



Project: AKZO NOBEL WAREHOUSE, AL QUOZE, DUBAI
Completion: July 2015
Area: 1860 m2
Flatness Tolerance: FM2s



Project: DANZAS AIRFREIGHT DWC, DUBAI
Completion: July 2015
Area: 10600 m2
Flatness Tolerance: Cat1



Project: BRANDS FOR LESS, JAFZA, DUBAI
Completion: June 2015
Area: 4500 m2
Flatness Tolerance: DM2



Project: SBM, JAFZA, DUBAI
Completion: June 2015
Area: 8200 m2
Flatness Tolerance: DM2



Project: AL SEER SPINNEYS KIZAD WAREHOUSE, ABU DHABI
Completion: June 2015
Area: 10694 m2
Flatness Tolerance: FM2s



Project: SANDFORD LLC, DWC, Dubai
Completion: May 2015
Area: 9200m2
Flatness Tolerance: DM2



Project: REAL FZE, JAFZA SOUTH, DUBAI
Completion: Feb 2015
Area: 4000m2
Flatness Tolerance: Cat1



Project: GRANDSTORES DIC, Dubai
Completion: Dec 2014
Area: 15000m2
Flatness Tolerance: FM2s



Project: MAG GROUP, JAFZA South, Dubai
Completion: Oct 2014
Area: 20500m2
Flatness Tolerance: Cat1

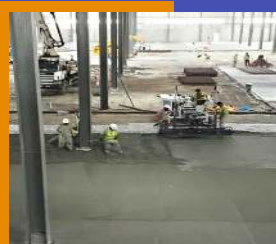


Project: DANZAS AEI EMIRATES FZ, DWC, Dubai
Completion: Oct 2014
Area: 22300 m2.
Flatness Tolerance: Cat1

Some of Our Projects



Project: GASOOS BIN HAMOODAH,
JAFZA South, Dubai
Completion: Aug 2014
Area: 6000 m²
Flatness Tolerance: FM2



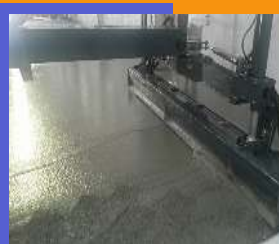
Project: AVENUE L.L.C, Sharjah
Completion: May 2014
Area: 4500 m²
Flatness Tolerance: Cat1



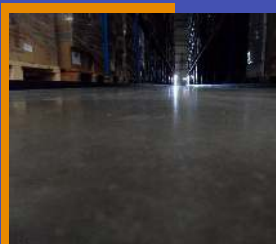
Project: HUTCHISON AJMAN
INTERNATIONAL TERMINALS
Completion: April 2014
Area: 7600 m²
Flatness Tolerance: Superflat



Project: RASASI PERFUMES, DUBAI
INDUSTRIAL CITY
Completion: April 2014
Area: 24000 m²
Flatness Tolerance: Cat1



Project: IDEALISM INDUSTRIES,
Ras Al Kaimah
Completion: March 2014
Area: 4600 m²
Flatness Tolerance: FM2



Project: INTERNATIONAL PAINTS,
Al Quoz, Dubai
Completion: Feb 2014
Area: 3000 m²
Flatness Tolerance: FM2



Project: H.H. RULERS COURT
AIRPLANE HANGAR, Nad Al Sheba,
Dubai Completion: Oct 2013
Area: 14100 m²
Flatness Tolerance: FM2



Project: DEWA DRINKING WATER
BOTTLING FACILITY, Dubai
Completion: Oct 2013
Area: 5100 m²
Flatness Tolerance: FM3



Project: G.E. EMIRATES JET ENGINE
FACILITY, Al Warsan, Dubai
Completion: Oct 2013
Area: 17000 m²
Flatness Tolerance: FM2



Project: G.E. EMIRATES JET ENGINE
FACILITY, Al Warsan, Dubai
Completion: Oct 2013
Area: 2500 m²
Flatness Tolerance: FM2



Project: AEROLOGISTICS DWC,
Dubai
Completion: July 2013
Area: 4900 m²
Flatness Tolerance: Cat1



Project: AL FAKHER TOBACCO,
Ajman
Completion: May 2013
Area: 2600 m²
Flatness Tolerance: DM3



Project: EROS GROUP, JEBEL ALI
INDUSTRIAL AREA, Dubai
Completion: Oct 2013
Area: 5200 m²
Flatness Tolerance: Cat1



Project: NTDE -Umm Ramool,
Dubai
Completion: May 2013
Area: 8000 m²
Flatness Tolerance: Cat1

Some of Our Projects



Project:Glenbeigh -Dubai World Central, Jebel Ali, Dubai
Completion: April 2013
Area: 6500 m²
Flatness Tolerance: Cat1



Project: SAVERGLAS Ras Al Khaimah
Completion: March 2012
Area: 3500 m²
Flatness Tolerance: FM2-Outdoor concrete roads



Project: AL FAKHER TOBAC-CO-Ajman Free Zone
Completion: March 2013
Area: 2700 m²
Flatness Tolerance: DM3



Project: MODERN PHARMACEUTICAL CO. Al Quoz, Dubai
Completion: Feb 2013
Area: 2500 m²
Flatness Tolerance: Cat1



Project: MODERN FREIGHT CO. Jebel Ali, Free Zone
Completion: Feb 2013
Area: 4000 m²
Flatness Tolerance: Cat1



Project: LOGICOM JAFZA South, Dubai
Completion: Nov 2012
Area: 4000 m²
Flatness Tolerance: Cat1



Project: ADPC, KHIZAD Show Room Warehouse, Khalifa Port, Abu Dhabi
Completion: Nov 2012
Area: 2000 m²
Flatness Tolerance: FM1



Project: ELSTER PACKAGING Ras Al Khaimah
Completion: Oct 2012
Area: 2300 m²
Flatness Tolerance: FM2



Project: Spinneys RasAl Kaimah
Completion: Sept 2012
Area: 12000 m²
Flatness Tolerance: Cat1



Project: CATERPILLAR LOGISTICS Warehouse Extension, Jebel Ali, Dubai
Completion: May 2012
Area: 3600m²
Flatness Tolerance: FM2Special



Project: UNITED MARKETING GROUP INTERNATIONAL, Jebel Ali, Dubai
Completion: March2012
Area: 9000m²
Flatness Tolerance:Cat1



Project: UNILEVER GULF FZE LIPTON TEA FACTORY
Jebel Ali Free Zone,Dubai
Completion: February2012 Area: 2600m² Flatness Tolerance:Cat1



Project: CUMMINS MIDDLE EAST-FZE, Jebel Ali Free Zone, Dubai
Completion: January2012
Area: 5000m²
Flatness Tolerance: FM2Special



Project: REAL FZE LOGISTICSFACILITY, Jebel Ali, Dubai
Completion: November2011
Area: 14000m²
Flatness Tolerance: FM2S